



SUSAN METCALFE  
RESIDENTIAL



## Egerton Gardens, Knightsbridge, SW3

£1,150,000

Bedrooms	2
Bathrooms	2
Surface	800 sqft
Tenure	Share of Freehold
Service Charge	£3,300
Outdoor Space	Communal Gardens
Parking	Residents Permit
Council Tax	Council Tax Band: G (RBKC)

### 2 BEDROOM APARTMENT

Situated on the third floor (walk-up) of this much sought-after garden square, this bright and spacious 2-bedroom apartment benefits from spacious accommodation with views over the gardens (access by separate arrangement). The property has recently been refurbished and offers excellent accommodation, the apartment is located just minutes from all the amenities of Knightsbridge and South Kensington.

#### Features

reception room, two bedrooms, two bathrooms, separate kitchen, communal gardens subject to application.

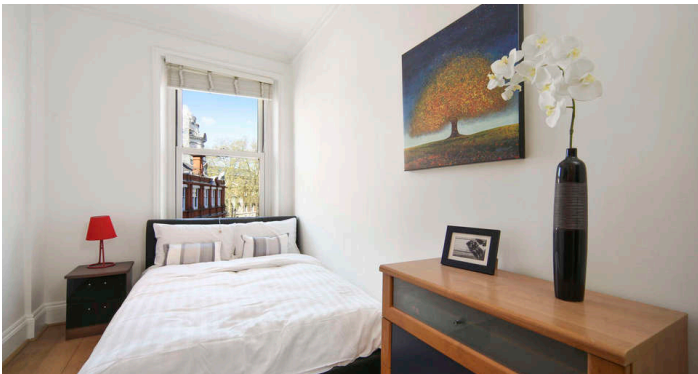
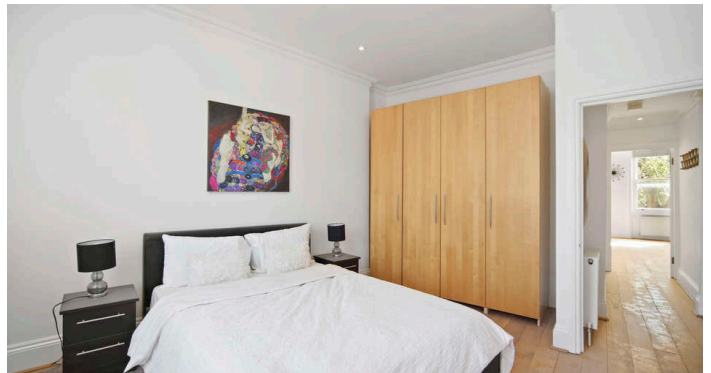
10 HOLLYWOOD ROAD CHELSEA SW10 9HY

020 7581 3349 [www.susanmetcalfe.com](http://www.susanmetcalfe.com) [info@susanmetcalfe.com](mailto:info@susanmetcalfe.com)





SUSAN METCALFE  
RESIDENTIAL



10 HOLLYWOOD ROAD CHELSEA SW10 9HY

020 7581 3349 [www.susanmetcalfe.com](http://www.susanmetcalfe.com) [info@susanmetcalfe.com](mailto:info@susanmetcalfe.com)

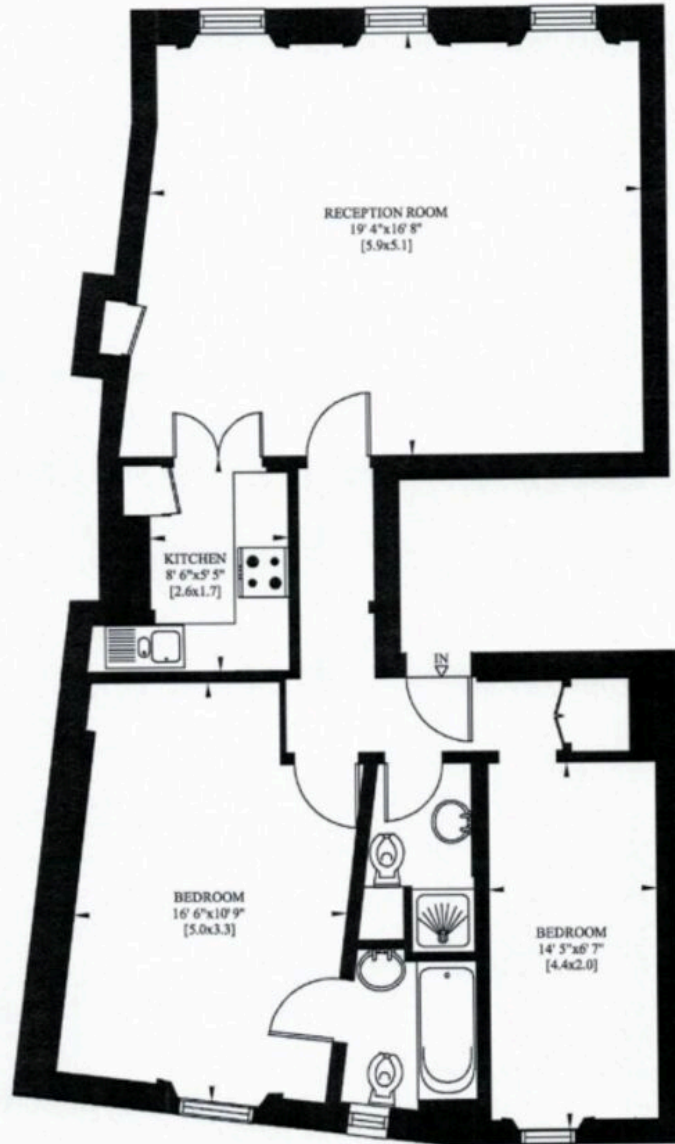




SUSAN METCALFE  
RESIDENTIAL

30B EGERTON GARDENS  
LONDON SW3

Gross Internal Area: 74 Sq. metres  
800 Sq. feet



THIRD FLOOR

10 HOLLYWOOD ROAD CHELSEA SW10 9HY

020 7581 3349 [www.susanmetcalfe.com](http://www.susanmetcalfe.com) [info@susanmetcalfe.com](mailto:info@susanmetcalfe.com)



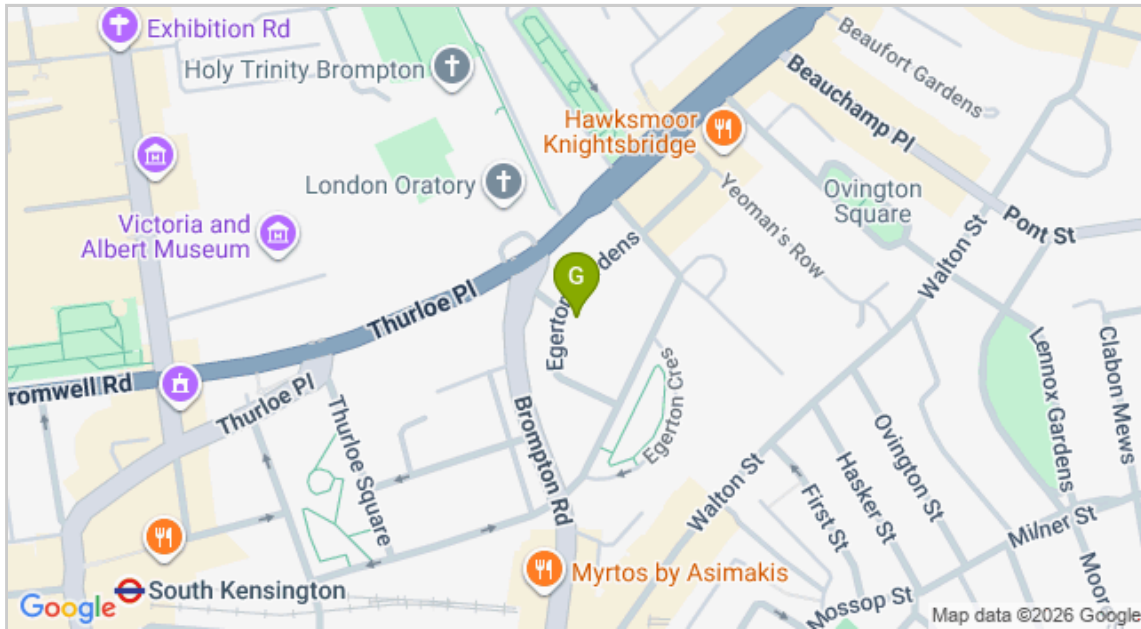


SUSAN METCALFE  
RESIDENTIAL

Energy Efficiency Rating		Environmental Impact (CO <sub>2</sub> ) Rating	
	Current	Potential	
Very energy efficient - lower running costs			Very environmentally friendly - lower CO <sub>2</sub> emissions
(92-100) <b>A</b>			(92-100) <b>A</b>
(81-91) <b>B</b>			(81-91) <b>B</b>
(69-80) <b>C</b>			(69-80) <b>C</b>
(55-68) <b>D</b>			(55-68) <b>D</b>
(39-54) <b>E</b>			(39-54) <b>E</b>
(21-38) <b>F</b>			(21-38) <b>F</b>
(1-20) <b>G</b>			(1-20) <b>G</b>
Not energy efficient - higher running costs			Not environmentally friendly - higher CO <sub>2</sub> emissions
<b>England &amp; Wales</b>	EU Directive 2002/91/EC		<b>England &amp; Wales</b>
			EU Directive 2002/91/EC

The energy efficiency rating is a measure of the overall efficiency of a home. The higher the rating the more energy efficient the home is and the lower the fuel bills will be.

The environmental impact rating is a measure of a home's impact on the environment in terms of carbon dioxide (CO<sub>2</sub>) emissions. The higher the rating the less impact it has on the environment.



IMPORTANT NOTICE

Susan Metcalfe Residential, their clients and any joint agents give notice that: 1. They are not authorised to make or give any representations or warranties in relation to the property either here or elsewhere, either on their own behalf or on behalf of their client or otherwise. They assume no responsibility for any statement that may be made in these particulars. These particulars do not form part of any offer or contract and must not be relied upon as statements or representations of fact. 2. Any areas, measurements or distances are approximate. The text, photographs and plans are for guidance only and are not necessarily comprehensive. It should not be assumed that the property has all necessary planning, building regulation or other consents and Susan Metcalfe Residential have not tested any services, equipment or facilities.

10 HOLLYWOOD ROAD CHELSEA SW10 9HY

020 7581 3349 www.susanmetcalfe.com info@susanmetcalfe.com

