

Egerton Gardens, Knightsbridge, SW3

£1,150,000

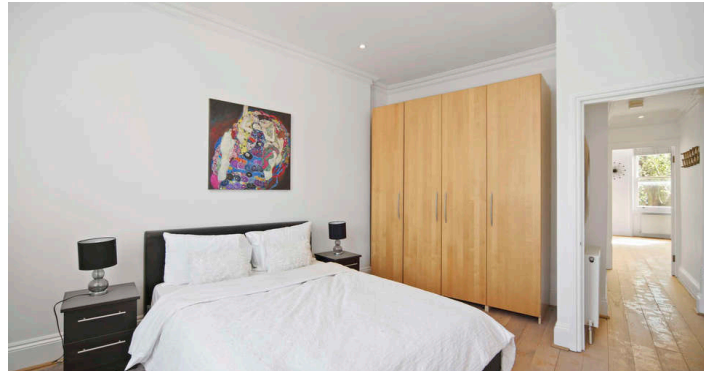
Bedrooms	2
Bathrooms	2
Surface	800 sqft
Tenure	Share of Freehold
Service Charge	£3,300
Outdoor Space	Communal Gardens
Parking	Residents Permit
Council Tax	Council Tax Band: G (RBKC)

2 BEDROOM APARTMENT

Situated on the third floor (walk-up) of this much sought-after garden square, this bright and spacious 2-bedroom apartment benefits from spacious accommodation with views over the gardens (access by separate arrangement). The property has recently been refurbished and offers excellent accommodation, the apartment is located just minutes from all the amenities of Knightsbridge and South Kensington.

Features

reception room, two bedrooms, two bathrooms, separate kitchen, communal gardens subject to application.

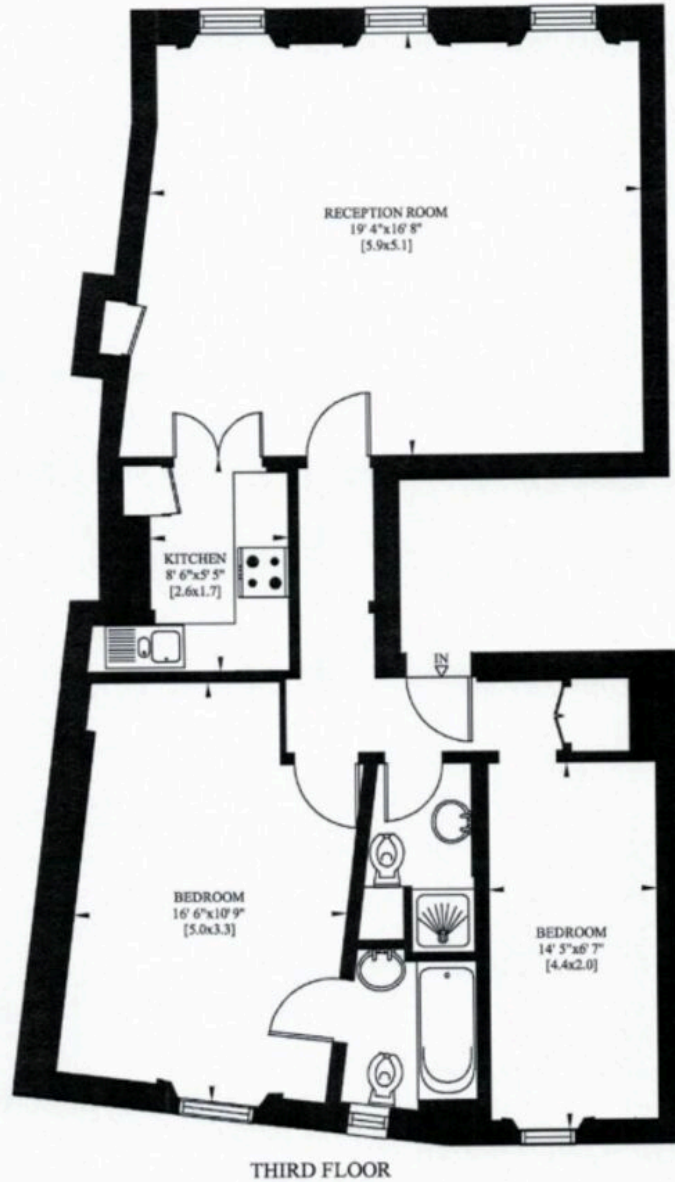


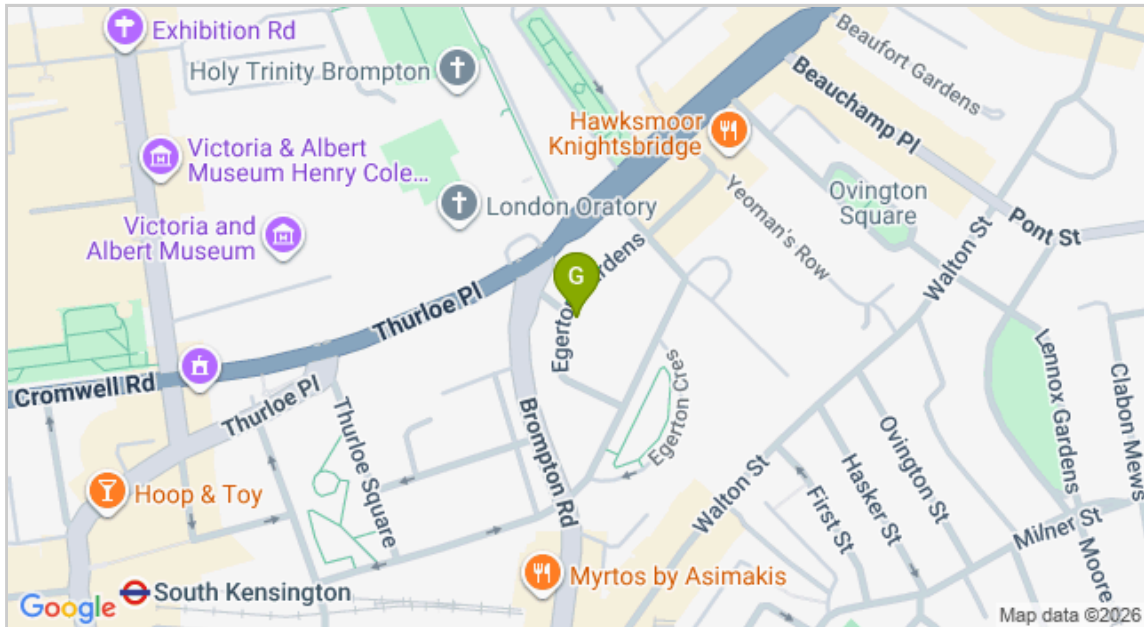
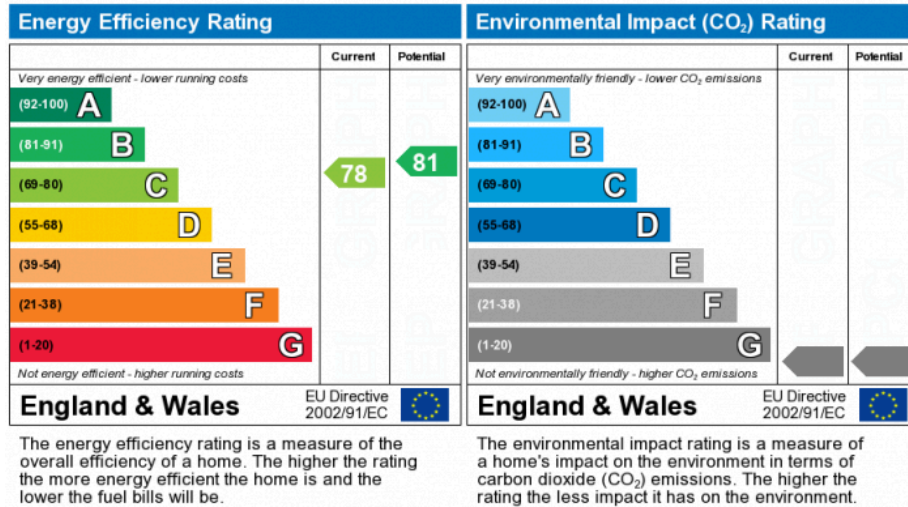


SUSAN METCALFE
RESIDENTIAL

30B EGERTON GARDENS
LONDON SW3

Gross Internal Area: 74 Sq. metres
800 Sq. feet





IMPORTANT NOTICE

Susan Metcalfe Residential, their clients and any joint agents give notice that: 1. They are not authorised to make or give any representations or warranties in relation to the property either here or elsewhere, either on their own behalf or on behalf of their client or otherwise. They assume no responsibility for any statement that may be made in these particulars. These particulars do not form part of any offer or contract and must not be relied upon as statements or representations of fact. 2. Any areas, measurements or distances are approximate. The text, photographs and plans are for guidance only and are not necessarily comprehensive. It should not be assumed that the property has all necessary planning, building regulation or other consents and Susan Metcalfe Residential have not tested any services, equipment or facilities.