



SUSAN METCALFE  
RESIDENTIAL



## Bravington Road, Queen's Park, W9

£450,000

Bedrooms	2
Bathrooms	1
Surface	481 sqft
Tenure	Leasehold 82 years
Ground Rent	£100
Service Charge	£2,153
Outdoor Space	None
Parking	Residents Permit
Council Tax	Council Tax Band D (Westminster)

### SPACIOUS 2-BEDROOM FIRST FLOOR APARTMENT

A spacious two-bedroom apartment situated on the first floor of this well-maintained Victorian period conversion in this quiet leafy residential street in the heart of Maida Vale. The property benefits from a spacious reception room with an open plan kitchen with all appliances, wood floor throughout and two good size bedrooms and one family bathroom. Bravington Road is conveniently located near many good transport links (Maida Vale and Queen's Park underground stations) and all the shops, cafes and restaurants of Little Venice, Maida Vale, Portobello Road, and Queen's Park.

#### Features

entrance hall, reception room, open plan fully fitted kitchen, 2 double bedrooms, bathroom.



10 HOLLYWOOD ROAD CHELSEA SW10 9HY

020 7581 3349 [www.susanmetcalfe.com](http://www.susanmetcalfe.com) [info@susanmetcalfe.com](mailto:info@susanmetcalfe.com)





SUSAN METCALFE  
RESIDENTIAL



10 HOLLYWOOD ROAD CHELSEA SW10 9HY

020 7581 3349 [www.susanmetcalfe.com](http://www.susanmetcalfe.com) [info@susanmetcalfe.com](mailto:info@susanmetcalfe.com)

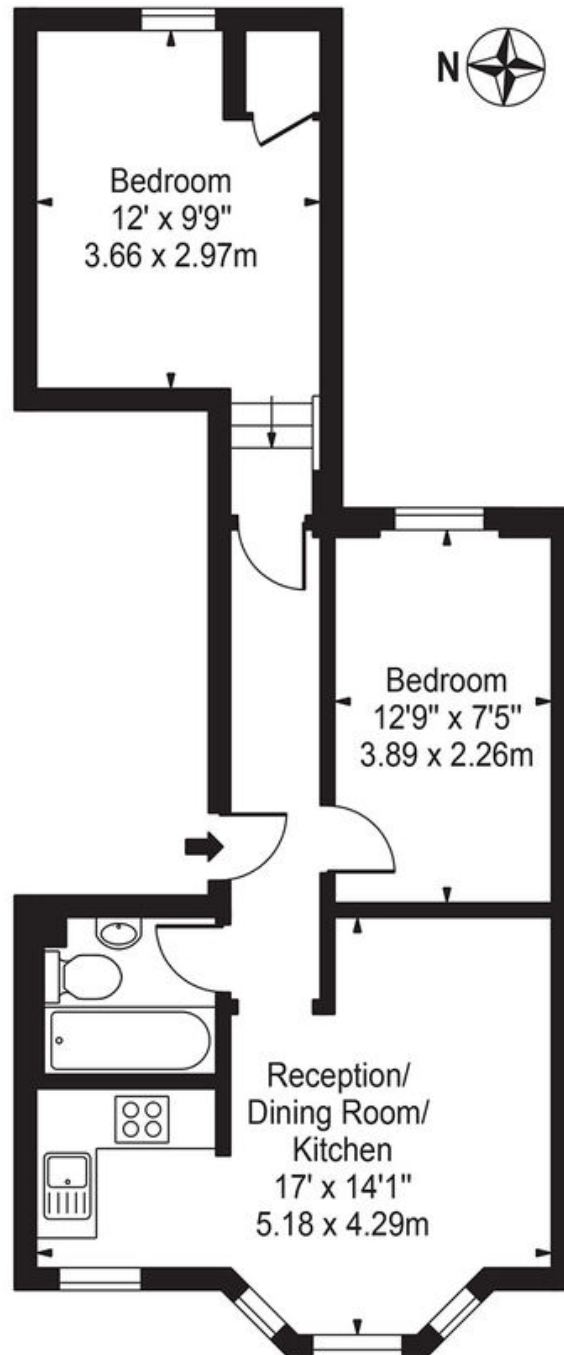




SUSAN METCALFE  
RESIDENTIAL

## Bravington Road

Approx. Gross Internal Area 481 Sq Ft - 44.69 Sq M



### First Floor

For Illustration Purposes Only - Not To Scale

This floor plan should be used as a general outline for guidance only and does not constitute in whole or in part an offer or contract. Any intending purchaser or lessee should satisfy themselves by inspection, searches, enquiries and full survey as to the correctness of each statement. Any areas, measurements or distances quoted are approximate and should not be used to value a property or be the basis of any sale or let.



10 HOLLYWOOD ROAD CHELSEA SW10 9HY

020 7581 3349 [www.susanmetcalfe.com](http://www.susanmetcalfe.com) [info@susanmetcalfe.com](mailto:info@susanmetcalfe.com)



