



SUSAN METCALFE
RESIDENTIAL



LUCAS HOUSE, 552 KINGS ROAD, CHELSEA, SW10

£635 per week

Bedrooms	1
Bathrooms	1
Furnished	Furnished
Availability	8th June 2026
Surface	613 sqft
Outdoor Space	Communal Gardens
Parking	Underground Car Park
Council Tax	Council Tax Band: F (RBKC)

BRIGHT ONE BEDROOM APARTMENT IN GATED DEVELOPMENT

A bright one bedroom apartment on the fifth floor (with lift) in this prestigious Kings Chelsea private gated development. The flat includes bespoke fixtures and fittings and air conditioning in the principal rooms. In addition, the development boasts round the clock portage, extensive landscaped gardens, leisure complex with swimming pool and tennis courts. The property also benefits from a private and secure underground parking space.

Features

entrance, reception/dining room, separate fully fitted kitchen, double bedroom, bathroom, air conditioning, 24 hour on site porter, access to residents' gym facilities, secure underground parking space, security. lift.



10 HOLLYWOOD ROAD CHELSEA SW10 9HY

020 7581 3349 www.susanmetcalfe.com info@susanmetcalfe.com





SUSAN METCALFE
RESIDENTIAL



10 HOLLYWOOD ROAD CHELSEA SW10 9HY

020 7581 3349 www.susanmetcalfe.com info@susanmetcalfe.com

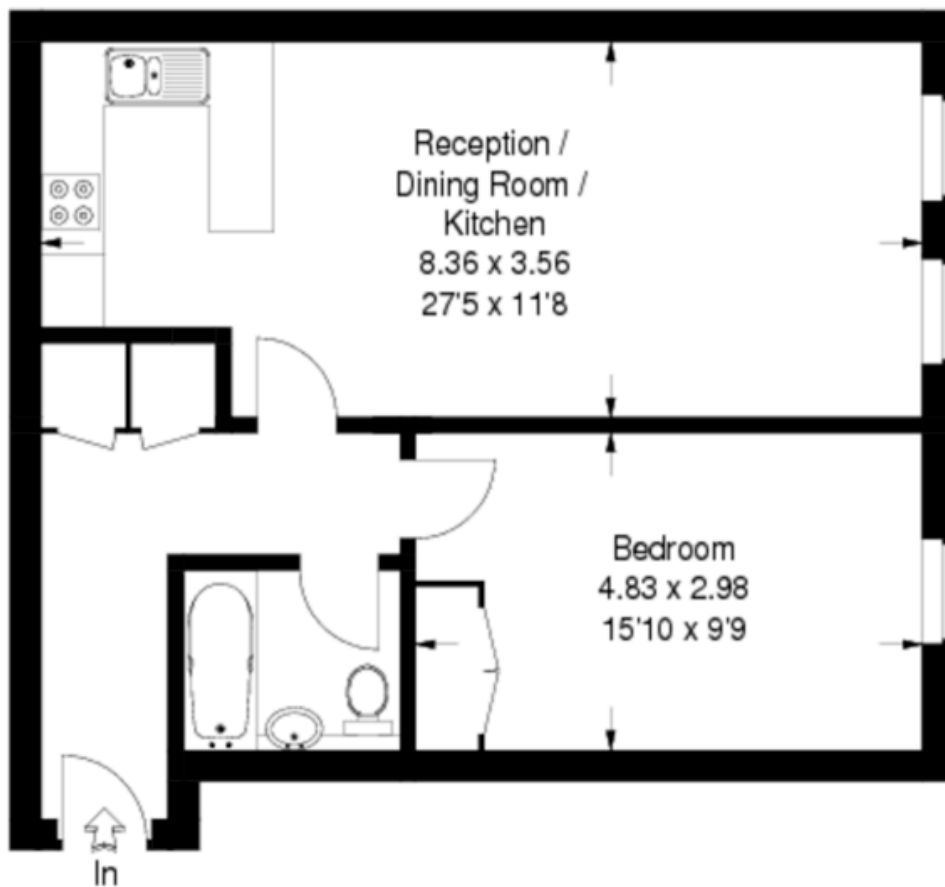




SUSAN METCALFE
RESIDENTIAL

Lucas House

Approximate Gross Internal Area
57 sq m / 613 sq ft



Fifth Floor

This plan is for layout guidance only. Not drawn to scale unless stated.
Windows & door openings are approximate. Whilst every care is taken in the preparation of this plan, please check all dimensions, shapes & compass bearings before making any decisions reliant upon them. (ID66213)



10 HOLLYWOOD ROAD CHELSEA SW10 9HY

020 7581 3349 www.susanmetcalfe.com info@susanmetcalfe.com



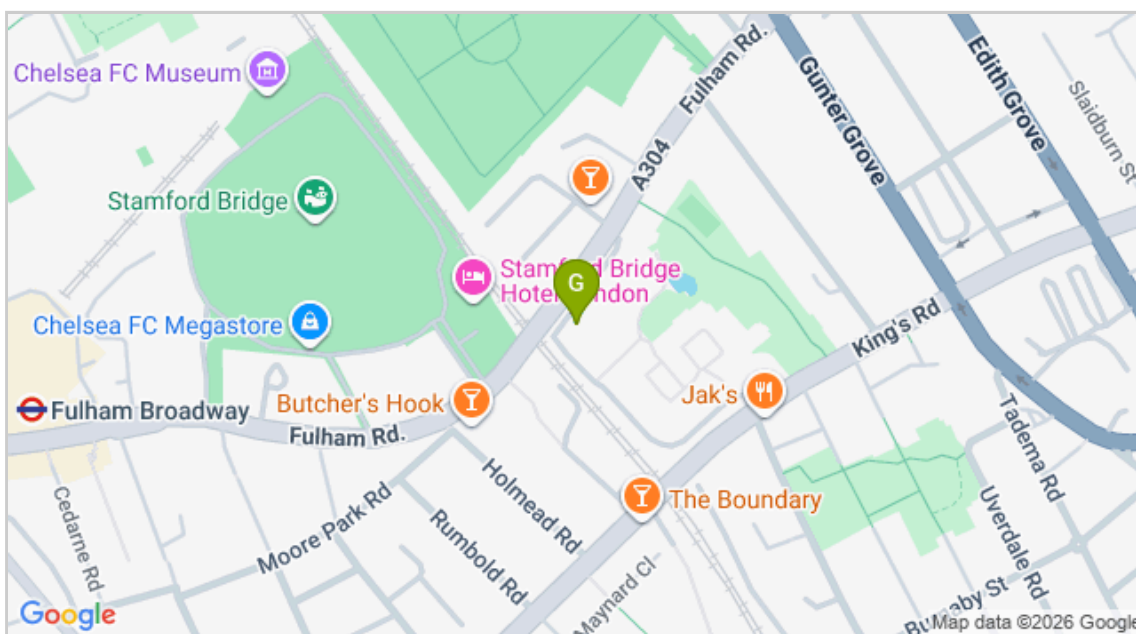


SUSAN METCALFE
RESIDENTIAL

Energy Efficiency Rating			Environmental Impact (CO ₂) Rating		
	Current	Potential		Current	Potential
Very energy efficient - lower running costs (92-100) A			Very environmentally friendly - lower CO ₂ emissions (92-100) A		
(81-91) B			(81-91) B		
(69-80) C			(69-80) C		
(55-68) D			(55-68) D		
(39-54) E			(39-54) E		
(21-38) F			(21-38) F		
(1-20) G			(1-20) G		
Not energy efficient - higher running costs			Not environmentally friendly - higher CO ₂ emissions		
England & Wales	EU Directive 2002/91/EC		England & Wales	EU Directive 2002/91/EC	

The energy efficiency rating is a measure of the overall efficiency of a home. The higher the rating the more energy efficient the home is and the lower the fuel bills will be.

The environmental impact rating is a measure of a home's impact on the environment in terms of carbon dioxide (CO₂) emissions. The higher the rating the less impact it has on the environment.



IMPORTANT NOTICE

Susan Metcalfe Residential, their clients and any joint agents give notice that: 1. They are not authorised to make or give any representations or warranties in relation to the property either here or elsewhere, either on their own behalf or on behalf of their client or otherwise. They assume no responsibility for any statement that may be made in these particulars. These particulars do not form part of any offer or contract and must not be relied upon as statements or representations of fact. 2. Any areas, measurements or distances are approximate. The text, photographs and plans are for guidance only and are not necessarily comprehensive. It should not be assumed that the property has all necessary planning, building regulation or other consents and Susan Metcalfe Residential have not tested any services, equipment or facilities.

10 HOLLYWOOD ROAD CHELSEA SW10 9HY



020 7581 3349

www.susanmetcalfe.com

info@susanmetcalfe.com

