



SUSAN METCALFE
RESIDENTIAL



Hollywood Mews, Chelsea, SW0

£3,500 per week

Bedrooms	2
Bathrooms	2
Furnished	Furnished
Availability	1st July 2026
Surface	913 sqft
Outdoor Space	Patio
Parking	Residents Permit
Council Tax	Council Tax Band: G RBKC

CHARMING 2-BEDROOM MEWS HOUSE

Short Let Only (July, August, September 2026): A quintessential, charming and beautifully presented 2-bedroom mews house tucked away on a quiet, picture-perfect private news in one of Chelsea's most desirable neighbourhoods offering a perfect London base for the summer months. The mews house combines classic charm with contemporary comfort and is just moments away from the Fulham Road and Kings Road and the area's renowned boutiques, restaurants and galleries. It also benefits from excellent transport links and easy access to all the key hotspots of the Capital.

Features

own entrance, reception room, open plan modern kitchen, breakfast bar, principal bedroom, en-suite bathroom, second double bedroom, 2nd bathroom, shower room/guest cloakroom, internal staircase, patio

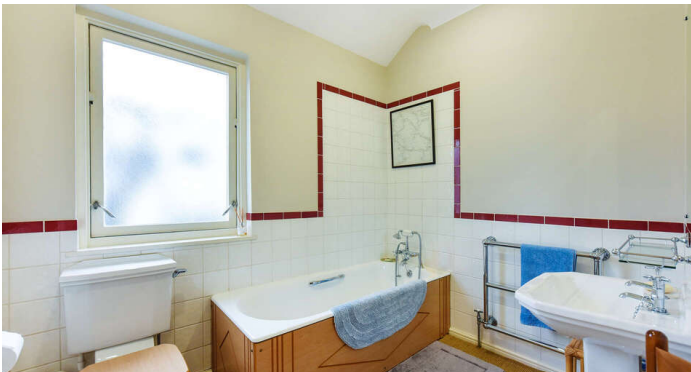
10 HOLLYWOOD ROAD CHELSEA SW10 9HY

020 7581 3349 www.susanmetcalfe.com info@susanmetcalfe.com





SUSAN METCALFE
RESIDENTIAL



10 HOLLYWOOD ROAD CHELSEA SW10 9HY
020 7581 3349 www.susanmetcalfe.com info@susanmetcalfe.com

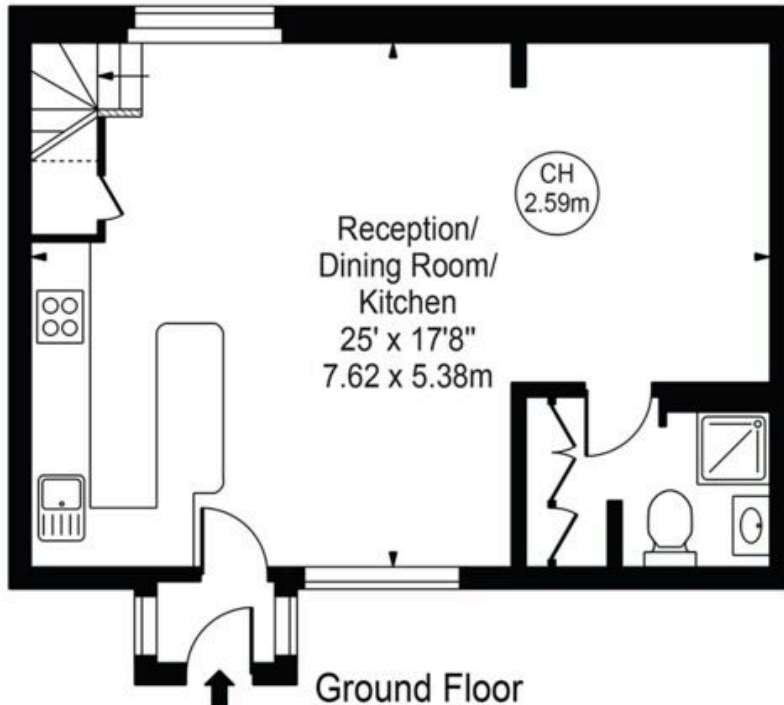
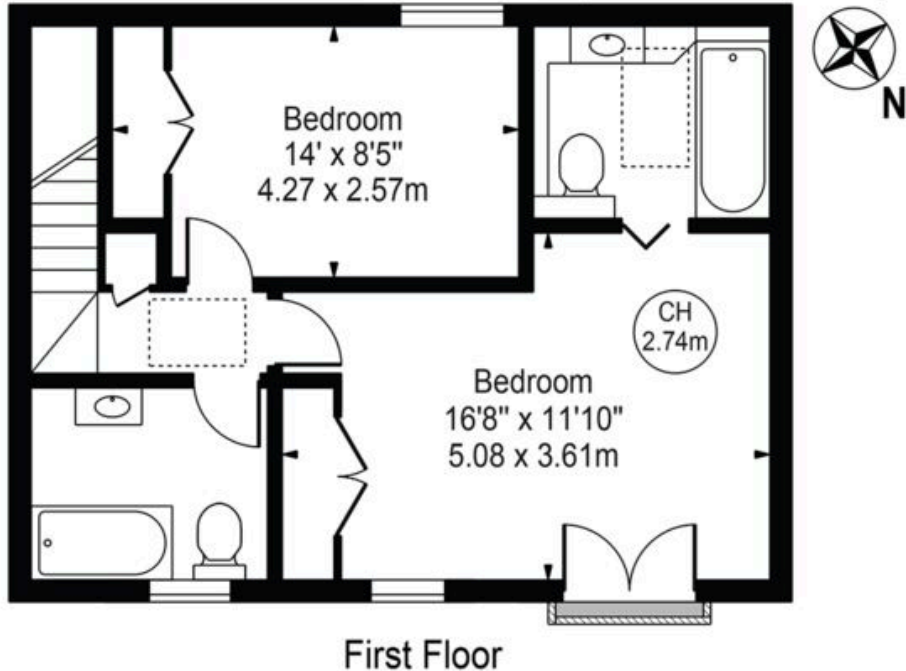




SUSAN METCALFE
RESIDENTIAL

Hollywood Mews

Approx. Gross Internal Area 913 Sq Ft - 84.82 Sq M



For Illustration Purposes Only - Not To Scale

This floor plan should be used as a general outline for guidance only and does not constitute in whole or in part an offer or contract. Any intending purchaser or lessee should satisfy themselves by inspection, searches, enquiries and full survey as to the correctness of each statement. Any areas, measurements or distances quoted are approximate and should not be used to value a property or be the basis of any sale or let.

10 HOLLYWOOD ROAD CHELSEA SW10 9HY



020 7581 3349 www.susanmetcalfe.com info@susanmetcalfe.com



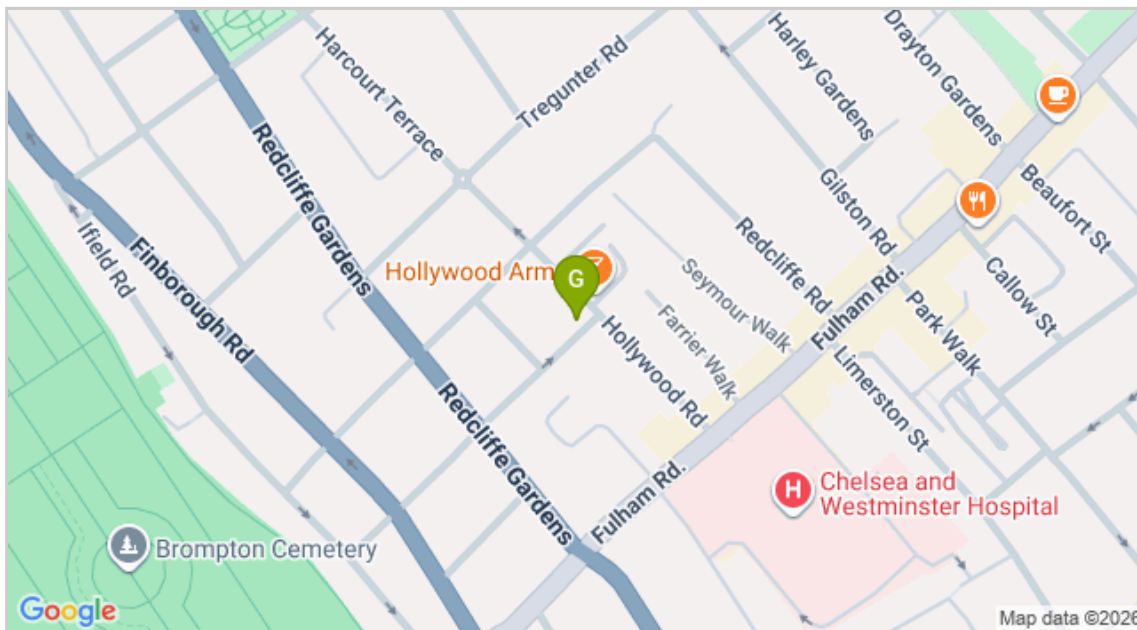


SUSAN METCALFE
RESIDENTIAL

Energy Efficiency Rating		Environmental Impact (CO ₂) Rating	
	Current	Potential	
Very energy efficient - lower running costs			Very environmentally friendly - lower CO ₂ emissions
(92-100) A			(92-100) A
(81-91) B			(81-91) B
(69-80) C		79	(69-80) C
(55-68) D	63		(55-68) D
(39-54) E			(39-54) E
(21-38) F			(21-38) F
(1-20) G			(1-20) G
Not energy efficient - higher running costs			Not environmentally friendly - higher CO ₂ emissions
England & Wales	EU Directive 2002/91/EC		England & Wales
			EU Directive 2002/91/EC

The energy efficiency rating is a measure of the overall efficiency of a home. The higher the rating the more energy efficient the home is and the lower the fuel bills will be.

The environmental impact rating is a measure of a home's impact on the environment in terms of carbon dioxide (CO₂) emissions. The higher the rating the less impact it has on the environment.



IMPORTANT NOTICE

Susan Metcalfe Residential, their clients and any joint agents give notice that: 1. They are not authorised to make or give any representations or warranties in relation to the property either here or elsewhere, either on their own behalf or on behalf of their client or otherwise. They assume no responsibility for any statement that may be made in these particulars. These particulars do not form part of any offer or contract and must not be relied upon as statements or representations of fact. 2. Any areas, measurements or distances are approximate. The text, photographs and plans are for guidance only and are not necessarily comprehensive. It should not be assumed that the property has all necessary planning, building regulation or other consents and Susan Metcalfe Residential have not tested any services, equipment or facilities.

10 HOLLYWOOD ROAD CHELSEA SW10 9HY



020 7581 3349

www.susanmetcalfe.com

info@susanmetcalfe.com

